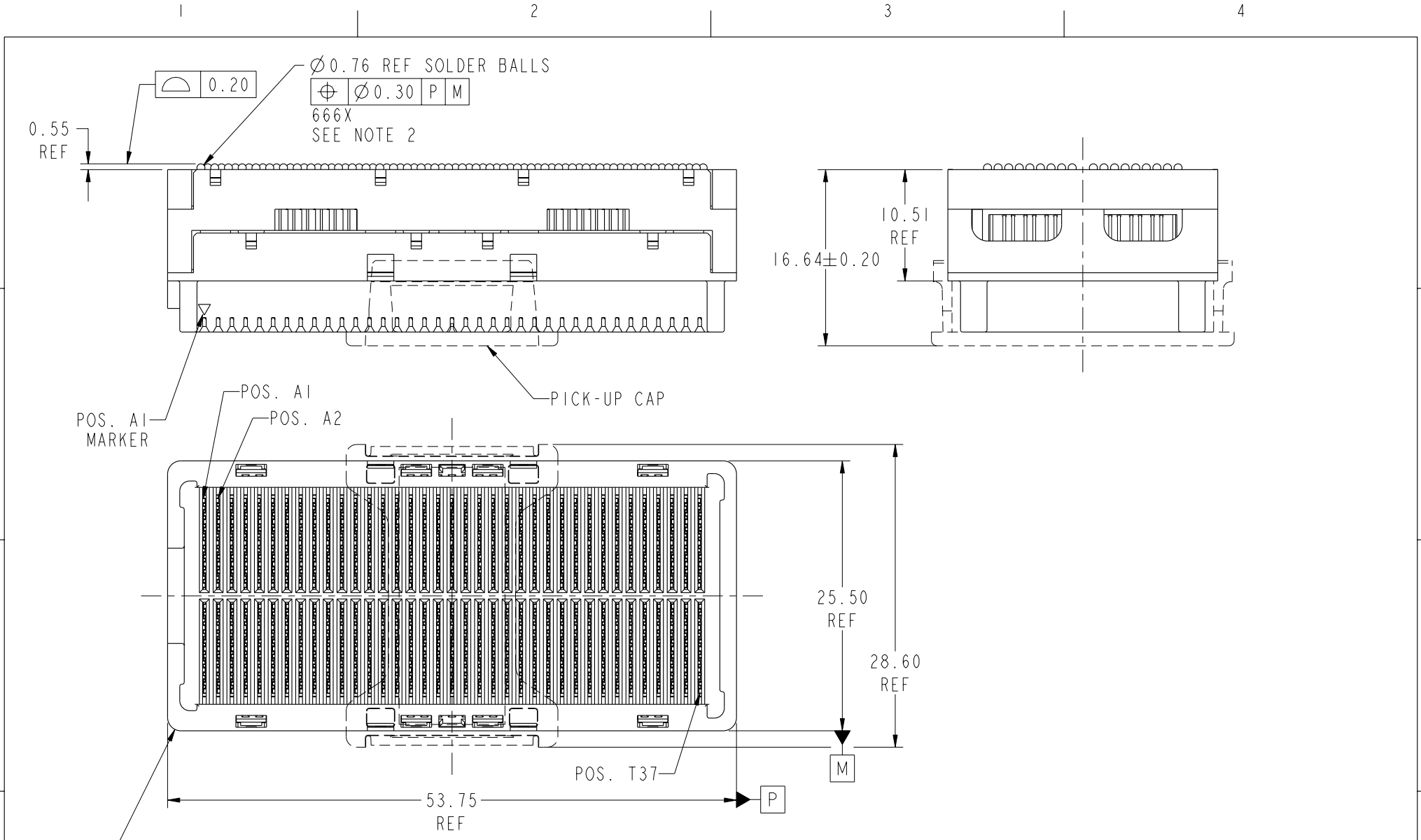




Copyright FCI.



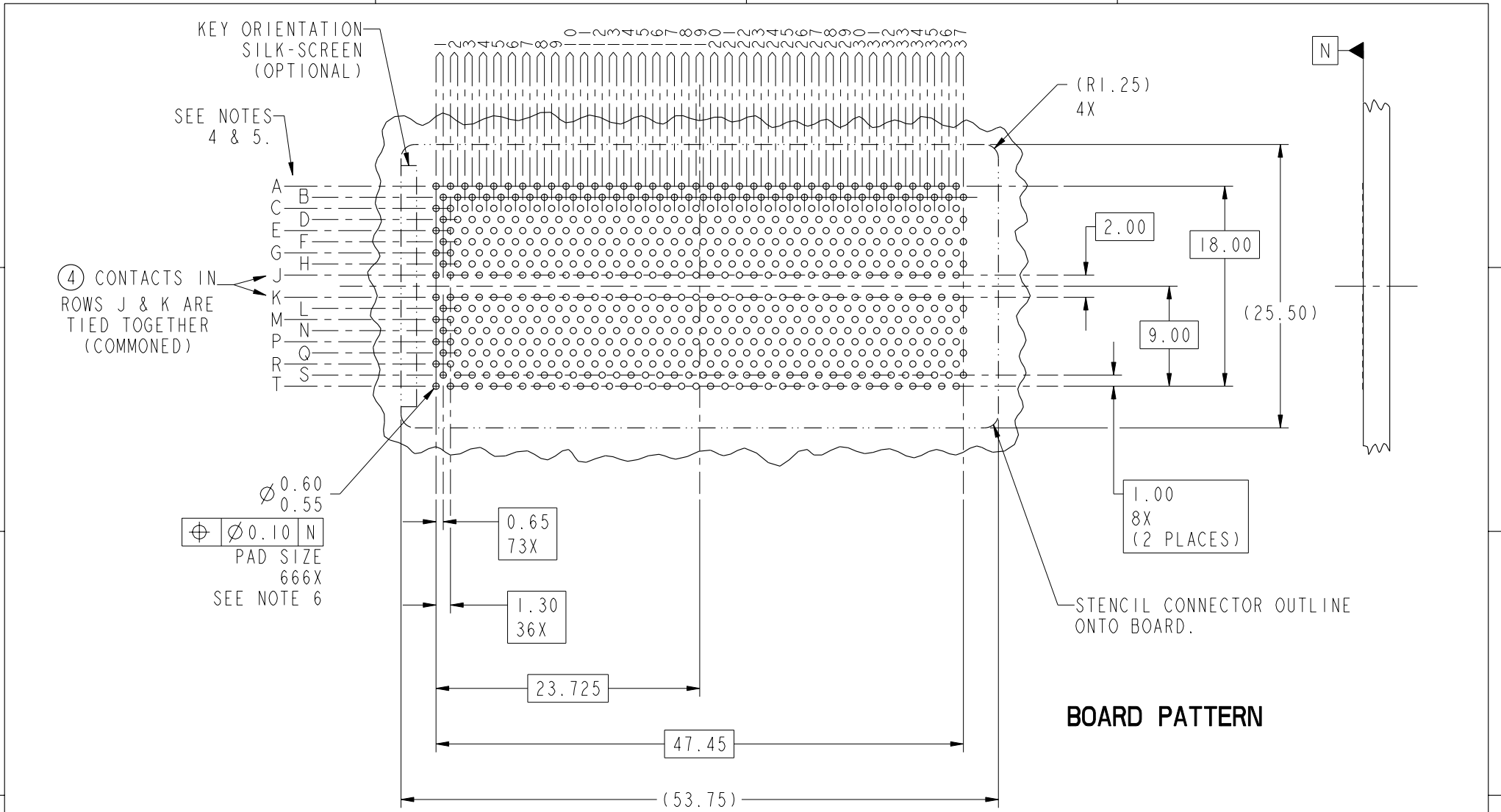
REV F - 2006-04-17

rev	ecn no	dr	date
A	V07-0606	LP	2007/09/19
-	-	-	-
-	-	-	-

www.fciconnect.com		surface 3.2 ASME Y14.5	tolerance std -	projection ASME Y14.5	mm
		TOLERANCES UNLESS OTHERWISE SPECIFIED			
Dr	L. POTTEIGER	2007/08/15	ANGULAR	0.X ±0.3	size A4
Eng	D. HARPER	2007/08/15	LINEAR	0.XX ±0.10	Scale 1:1
Chr	D. HARPER	2007/09/19	0° ±°	0.XXX ±0.050	ECN V07-0606
Appr	D. HARPER	2007/09/19	Product family	GIG-Array	Spec ref -
FCI		GIG-Array 11mm RECPT. ASSEMBLY, 296 SIGNAL POS.		dwg no	10081497
		Rev.	CUSTOMER		A
		catalog no	-		sheet 1 of 4



Copyright FCI.

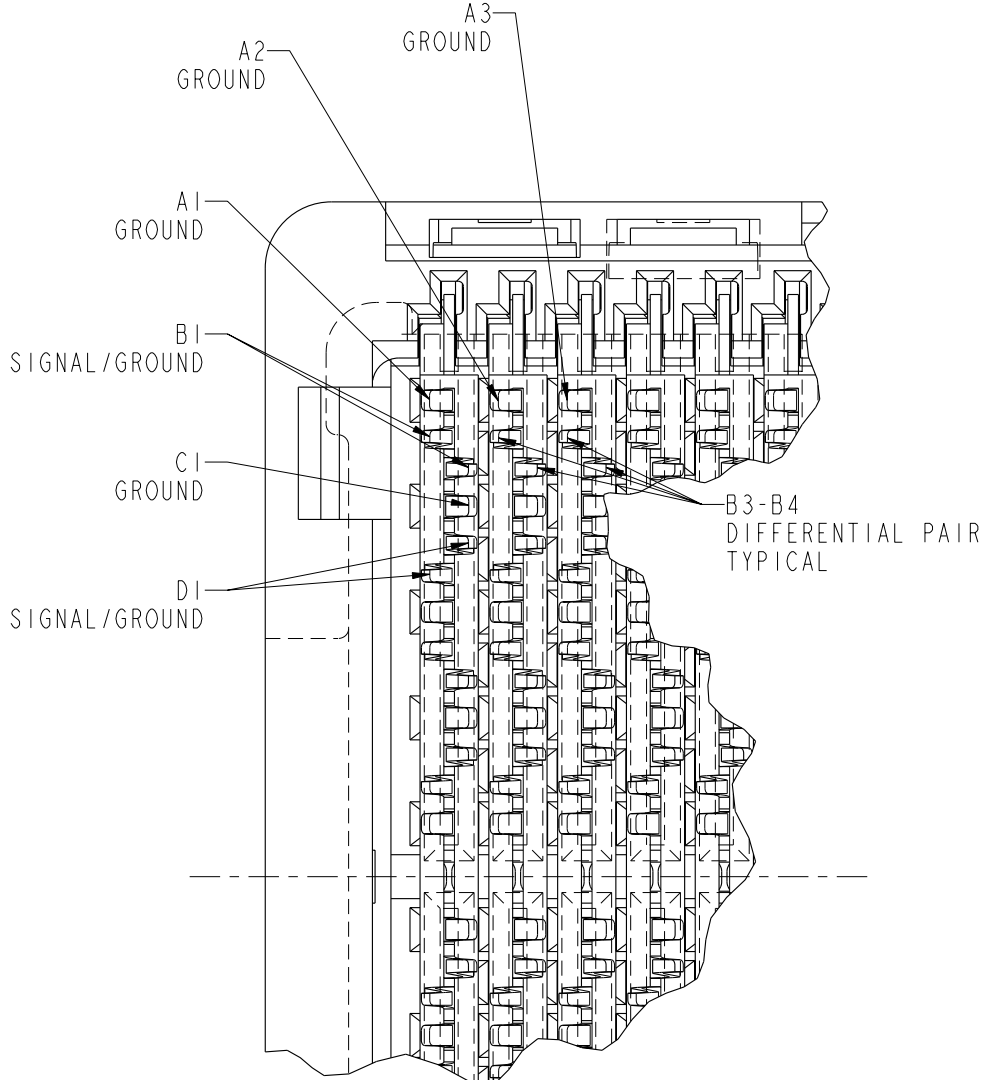


REV F - 2006-04-17

	title	GIG-Array 11mm RECPT. ASSEMBLY, 296 SIGNAL POS.	dwg no	10081497	Rev.	A
	catalog no	-	CUSTOMER	sheet 2 of 4		



Copyright FCI.



RECEPTACLE INTERFACE DESCRIPTION

NOTES:

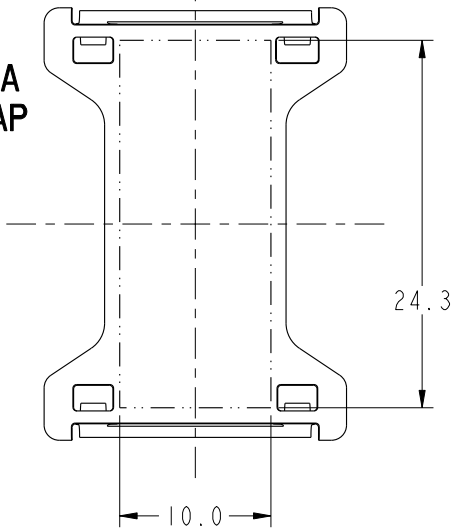
- ① MATERIAL:
HOUSING: LCP
CONTACT: COPPER ALLOY
PLATING (CONTACT): Au OVER Ni.
UL RATING: 94 V-0
SOLDER BALL: (SEE TABLE) EUTECTIC SnPb OR LEADFREE 95.5 Sn/4Ag/0.5Cu
- ② SOLDER BALLS WILL NOT BE PERFECT SPHERICAL SHAPE DUE TO REFLOW ATTACHMENT.
- ③ MATED HEIGHT EFFECTED BY CUSTOMERS' PCB PAD SIZE, PLATING, SOLDER REFLOW PROFILE & SOLDER PASTE.
- ④ CONTACTS IN ROWS A,C,E,G,J,K,M,P,R AND T ARE SINGLE BEAM CONTACTS, TYPICALLY USED AS GROUND PINS. (NOTE: CONTACTS IN ROWS J & K ARE TIED TOGETHER [COMMONED])
- ⑤ CONTACTS IN ROWS B,D,F,H,L,N,Q AND S ARE DUAL BEAM CONTACTS, TYPICALLY USED AS SIGNAL PINS.



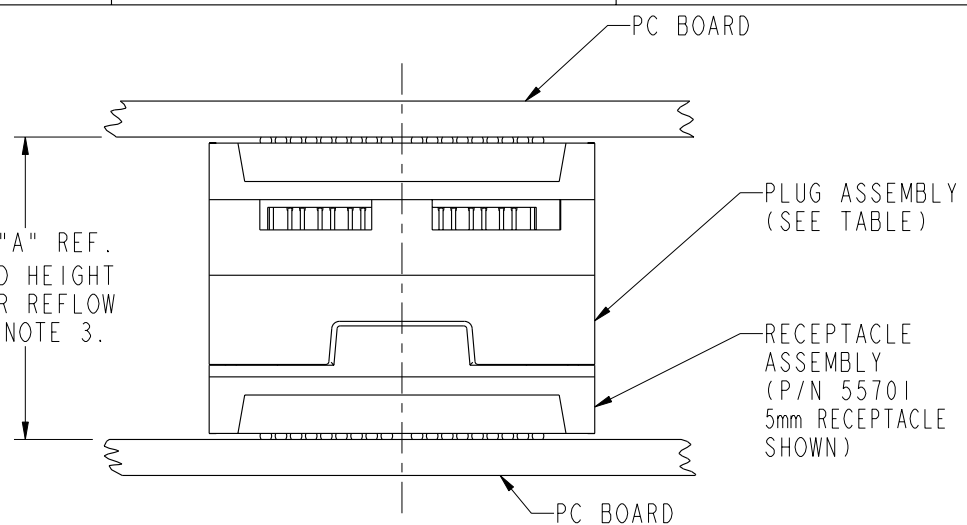
Title	GIG-Array 11mm RECPT.		dwg no	10081497	Rev.	A
	ASSEMBLY, 296 SIGNAL POS.					
catalog no	-	CUSTOMER	sheet 3 of 4			

PRODUCT NUMBER	SOLDER BALL
10081497-001	SnPb
10081497-001LF	SnAgCu LEADFREE (7)(8)

FLAT AREA PICK-UP CAP
SCALE 2:1



DIM "A" REF.
MATED HEIGHT
AFTER REFLOW
SEE NOTE 3.



END VIEW OF MATED CONNECTORS
SCALE 2:1

DIM. "A"	PLUG ASSEMBLY P/N
21	55720
23	10026804
24	10008026
26	55700
31	55727
36	10054784

NOTES CONTINUED

- (6) SPECIFIED POSITIONAL TOLERANCE DEFINES PAD TO PAD LOCATION WITHIN LAND PATTERN. POSITIONAL TOLERANCE OF LAND PATTERN TO FUDICIAL MARKS OR PCB DATUMS SHALL BE DEFINED BY CUSTOMER. FOR RECOMMENDED PRODUCT APPLICATION AND PCB DESIGN DETAILS, SEE DOC. NO. GS-20-016.
- (7) FOR PROPER APPLICATION FOLLOW FCI APPLICATION SPECIFICATION GS-20-033 LEADFREE SOLDER BALLS WILL NOT SOLDER PROPERLY IN A LEADED SOLDER PROCESS DUE TO A HIGHER REFLOW TEMPERATURE, LEADFREE PRODUCT IS THEREFORE NOT BACKWARDS COMPATIBLE WITH LEADED OR SOME SOLDERING APPLICATIONS. REFERENCE FCI APPLICATION SPECIFICATION.
- (8) THIS PRODUCT MEETS THE EUROPEAN UNION DIRECTIVES AND OTHER COUNTRY REGULATIONS AS DESCRIBED IN GS-22-008. PRODUCT MEETING WITH THES DIRECTIVE IS IDENTIFIED IN THE LOT CODE NUMBER MARKED ON EACH PART BY HAVING AN "X" IN THE SEVENTH CHARACTER POSITION.



TITLE GIG-Array 11mm RECPT. ASSEMBLY, 296 SIGNAL POS.	dwg no 10081497	Rev. A